

General Waste

What goes in the Red/Green Lid Wheelie Bin?



Plastic Bags



Food Scraps



**Meat Scraps
and Bones**



**Disposable
Coffee Cups**



Cling Film



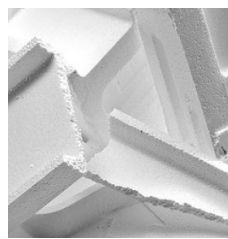
Jar Lids



**Drink Lids &
Aerosol Nozzles**



Bubble Wrap



**Polystyrene,
Styrofoam**



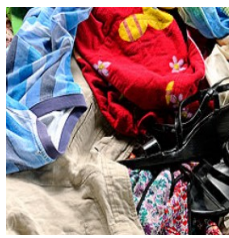
**Waxed
Cardboard**



**Drinking/Wine
Glasses**



**Broken Windows,
Mirrors**



**Clothing
& Fabric**



Garden Hose



Nappies



**Broken Drinking
Glasses**



Broken Crockery



**Pizza Box with
food scraps**



Broken Globes



**Broken
Ceramics**

Please consider donating unwanted, non-electrical items in good condition to your local charity shop.